

Daniels City Centre

WESLEY TOWER



Daniels

love where you live™

Say Hello to Wesley



Illustrations are artist's concept. E. & O. E.

Daniels City Centre

WESLEY TOWER

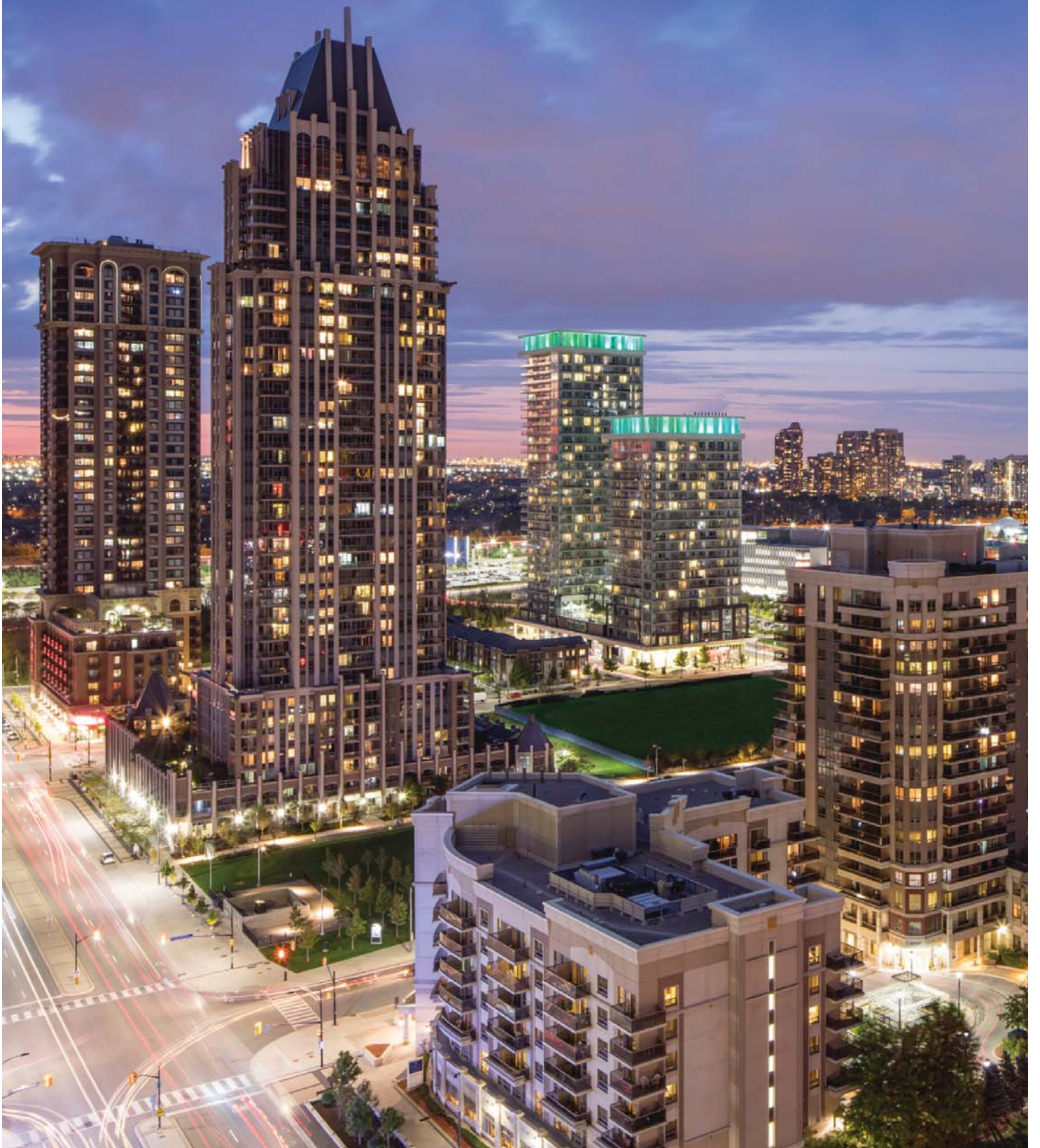
Mississauga's tall, good-looking newcomer

It's easy to fall in love when you find your perfect match - the right neighbourhood, the right suite layout, the right amenities, the right new home builder, the right time and definitely the right place. Lively, and full of community spirit, Mississauga's City Centre welcomes **Wesley Tower**, ideally located at the corner of Confederation Parkway and City Centre Drive as the newest addition to the iconic Daniels City Centre community.

Wesley understands your sense of style, the way you entertain, your fitness goals, your work/life balance, the importance of your family, how you want to spend your up and down-time, and how you want to live and play. The search for your new home is over.

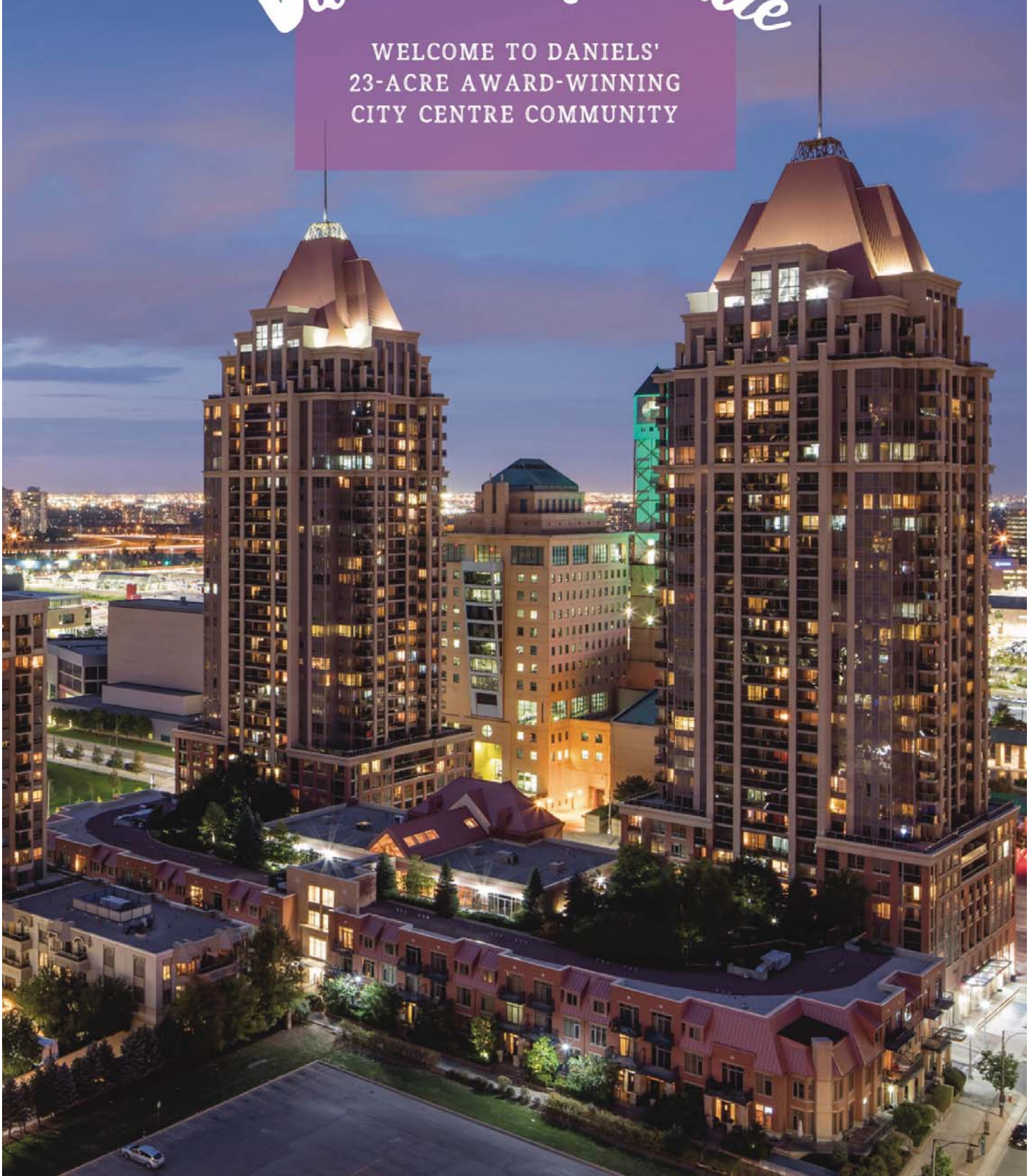
Say hello to Wesley

Daniels
love where you live™



Daniels City Centre

WELCOME TO DANIELS'
23-ACRE AWARD-WINNING
CITY CENTRE COMMUNITY





SHERIDAN COLLEGE



QUEEN ELIZABETH II JUBILEE GARDEN



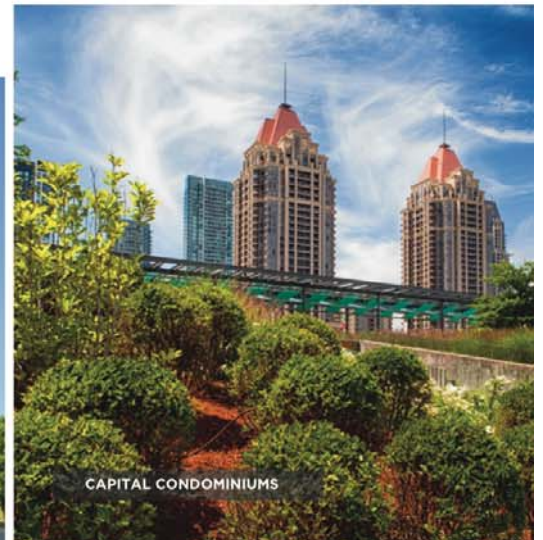
SECOND CUP



LIMELIGHT CONDOMINIUMS

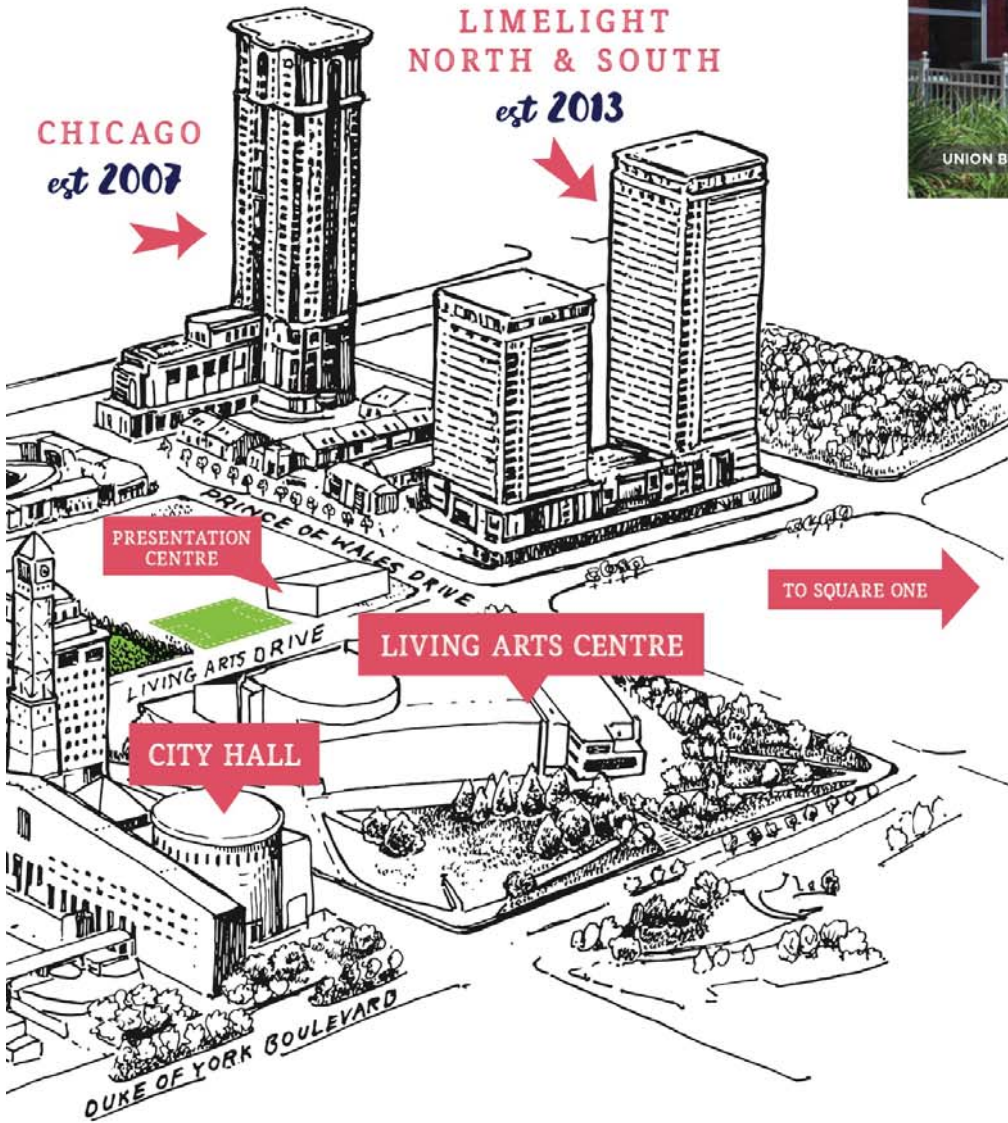


LIVING ARTS CENTRE



CAPITAL CONDOMINIUMS

Map is not to scale.
Illustration is artist's concept. E. & O. E.



EXPLORE THE ICONIC, VIBRANT 23-ACRE NEIGHBOURHOOD OF DANIELS CITY CENTRE

Wesley Tower will be the newest addition to the Mississauga City Centre's distinctive skyline as part of a master-planned community designed by The Daniels Corporation. As one of the first developers to recognize the growth potential of this community, Daniels has built a unique architectural landscape starting with Capital Condominiums in 2004, followed by the gargoyle-adorned One Park Tower, the Chicago School of Architecture-inspired Chicago Condominiums and, most recently, the green top-lit Limelight Condominiums. In keeping with Daniels' commitment to Mississauga's City Centre, **Wesley Tower** will take its place as the latest landmark in this dynamic community.

Daniels' multi-award-winning City Centre community is one of the GTA's most exciting residential destinations. This 23-acre master-planned neighbourhood is designed to make you feel instantly at home in a community full of pedestrian-friendly walkways, tree-lined streets, a 3-acre community park and beautiful public art. Some of the GTA's finest amenities are within convenient walking distance and include popular landmarks like Square One for shopping, Cineplex Odeon for the latest blockbuster, the Living Arts Centre for live theatre, Sheridan College's Hazel McCallion Campus for learning something new, Playdium for gaming galore as well as the YMCA for fun-filled activities. Plus, those who travel will have convenient access to Mississauga Transit, GO Transit, Highways 403, 401 and 407.

Daniels City Centre
WESLEY TOWER

Illustration is artist's concept. E. & O. E.



OUR Roots are Grounded

IN MISSISSAUGA



IN THE LATE 1970s,

THE DANIELS CORPORATION'S

FOUNDER AND CEO, MR. JOHN H. DANIELS, PIONEERED A NEW VISION FOR THE EMERGING 'NEW TOWN OF ERIN MILLS' IN MISSISSAUGA. HIS VISION FOR WHAT WAS TO COME IN THIS CITY WAS AND STILL IS EXTRAORDINARY. TODAY, WE ARE PROUD THAT **THE DANIELS CORPORATION** CONTINUES TO PLAY A ROLE IN BRINGING THIS VISION TO LIFE.

At Daniels, we work hard to create vibrant communities rooted in values and enriched with amenities. Over the years, Daniels has built numerous successful neighbourhoods; from the Daniels Erin Mills community and the iconic, award-winning condominium collection in Mississauga's City Centre, to our sell-out successes at Daniels FirstHome™ communities. Known as a city builder across the GTA, we've used innovation and creativity to introduce residential landmarks such as the NY Towers at Bayview and Sheppard in North York, Festival Tower atop TIFF Bell Lightbox in Toronto's Entertainment District, the world renowned and award-winning Regent Park revitalization in Toronto's Downtown East, and most recently Daniels Waterfront - City of the Arts - the new gateway to Toronto's East Bayfront. Now, we are upholding our city building ingenuity by continuing to grow Daniels City Centre with **WESLEY TOWER**.

Daniels

love where you live™



Your
corner
of the
city



This is your exciting new neighbourhood and we think you're going to love it.

Wesley Tower has pride of location, standing tall at the corner of Confederation Parkway and City Centre Drive. Steps from your front door are tree-lined pathways that will take you to the 3-acre park and spaces for quiet contemplation or fun play times with your family. Discover water features and public art along the way to your favourite coffee shop. It's your corner of the city and we know you're going to love it.

Map is not to scale and is subject to change due to Municipal and other regulatory approvals. Illustrations are artist's concept. E. & O. E.



A beautiful hello

Entering off Confederation Parkway, the lobby at **Wesley Tower** welcomes you home with a sophisticated mix of sculptural elements, sleek stone surfaces and contemporary furnishings. It's the perfect place to settle in and wait for your foodora delivery or relax and message friends before your UBER shows up. Need someone to receive a package while you're out? A 24-hour concierge service is there to not only make your life easier, but to also make you and your guests feel right at home every time you walk through the lobby door.



- 1 Entrance
- 2 Vestibule
- 3 Concierge Desk
- 4 Mail Room
- 5 Elevators
- 6 Parking Elevators

Illustrations are artist's concept. E. & O. E.



A person wearing a blue sweater is sitting on a grassy field, holding a white spray bottle. The background is a blurred green landscape with trees. The text is overlaid in a white, cursive font.

Wesley
plays
well
with kids
AND
Pets

CLUB **W**
Party Room



Outdoor
Terrace



LIL' **Wes**
Kids' Zone



CLUB **W**
Co-Working
Zone

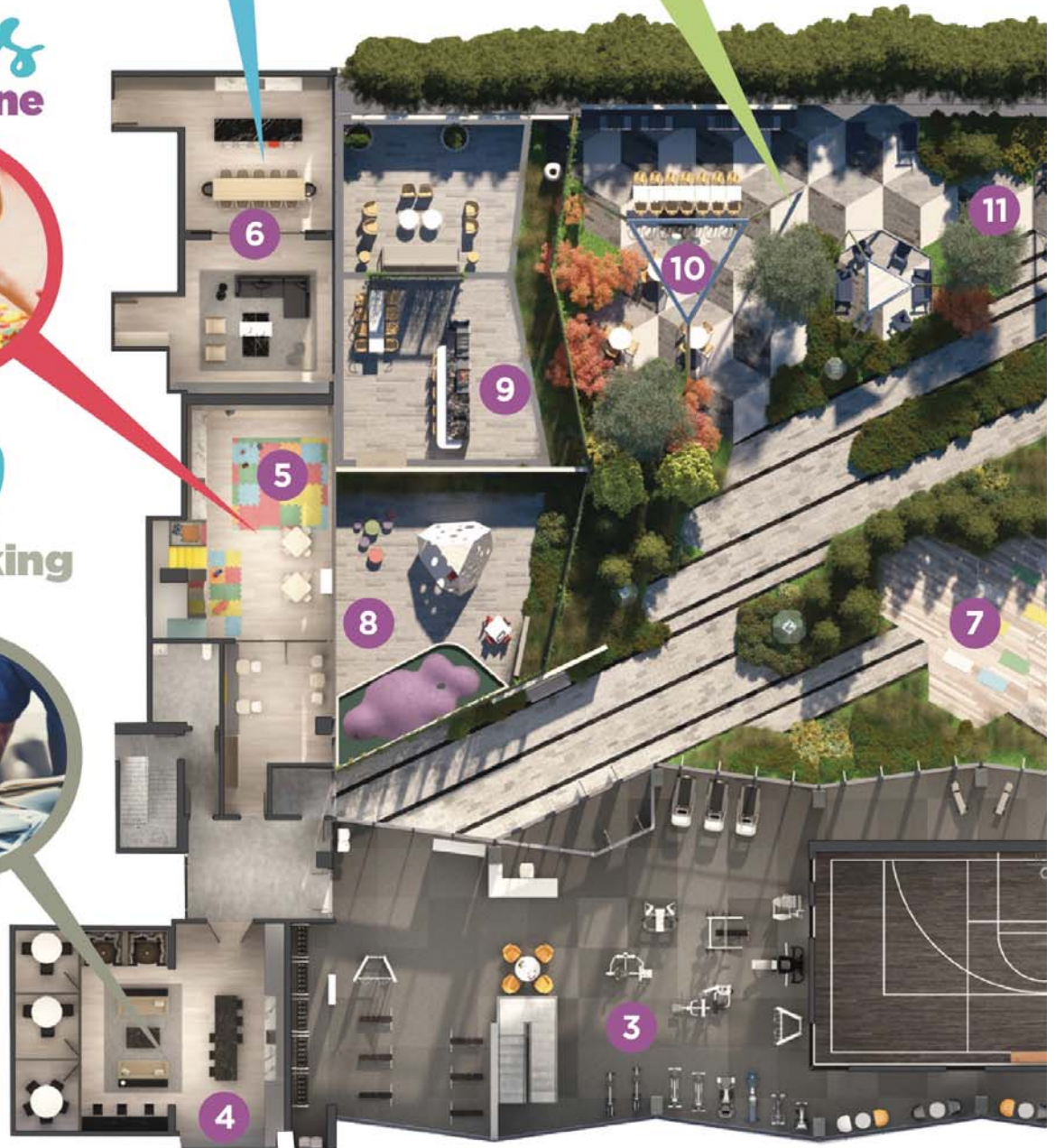


Illustration is artist's concept. E. & O. E.

Wesley. your friend with benefits



Yoga Zone



Half-Court



Club W on the 6th floor is a styled space that's bigger-than-life and will delight you and your family with amenities designed to amaze.

INDOOR

- 1 Climbing Wall
- 2 Half-Court
- 3 The Fit Zone
- 4 Co-Working Zone
- 5 Kids' Zone
- 6 Party Room

OUTDOOR

- 7 Yoga Zone
- 8 Kids' Play Structures
- 9 Party Room & Outdoor Terrace
- 10 BBQs/Outdoor Dining
- 11 Lounge Seating

CLUB **W**

Wesley will get your heart racing

Whether you're trying to stay competitive or just starting your fitness journey, Wesley is your ultimate workout partner. From cardio to weights to yoga and more, The Fit Zone offers a state-of-the-art fitness centre for all fitness types and levels. You'll also find a multi-purpose half-court that's perfect for rainy day pickup games and a one-of-a-kind climbing wall to put your skills to the test.



Illustration is artist's concept. E. & O. E.



CLUB 
THE FIT ZONE



Wesley knows how to have fun

Family time is your favourite time, and Wesley has everything you need to make the most of it. The 6th floor Kids' Zone is a bright, exciting place where crafting, playing and imagination are encouraged. Finger paint a masterpiece for the fridge, curl up for a good story or take a turn on the indoor slide. You can even take the fun outside onto the connecting outdoor terrace play area. This unique amenity is truly a space that can be enjoyed by kids of all ages, and best of all, is all under one roof.

Illustration is artist's concept. E. & O. E.



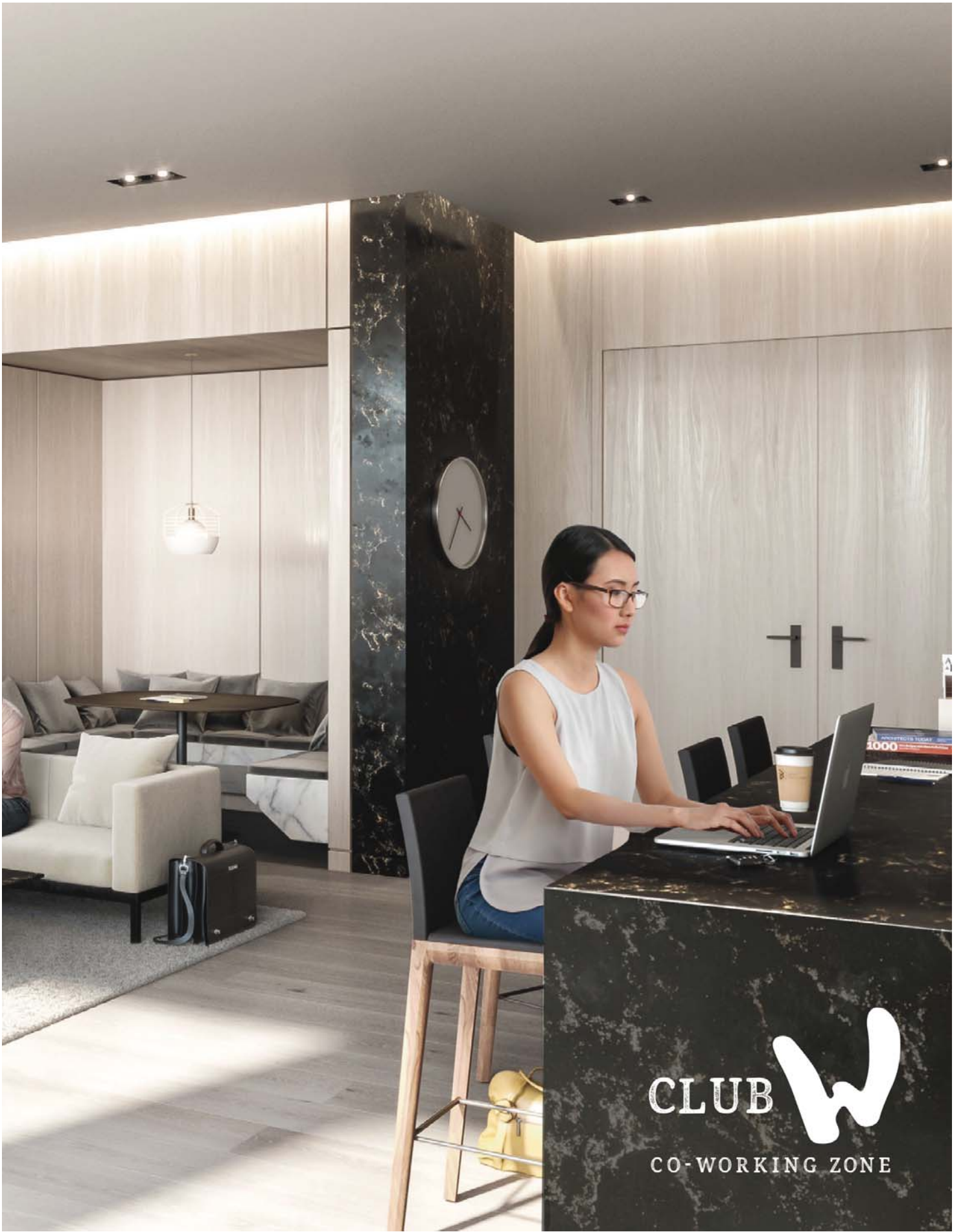
LIL' *Wes*
KIDS' ZONE



Wesley likes to work it

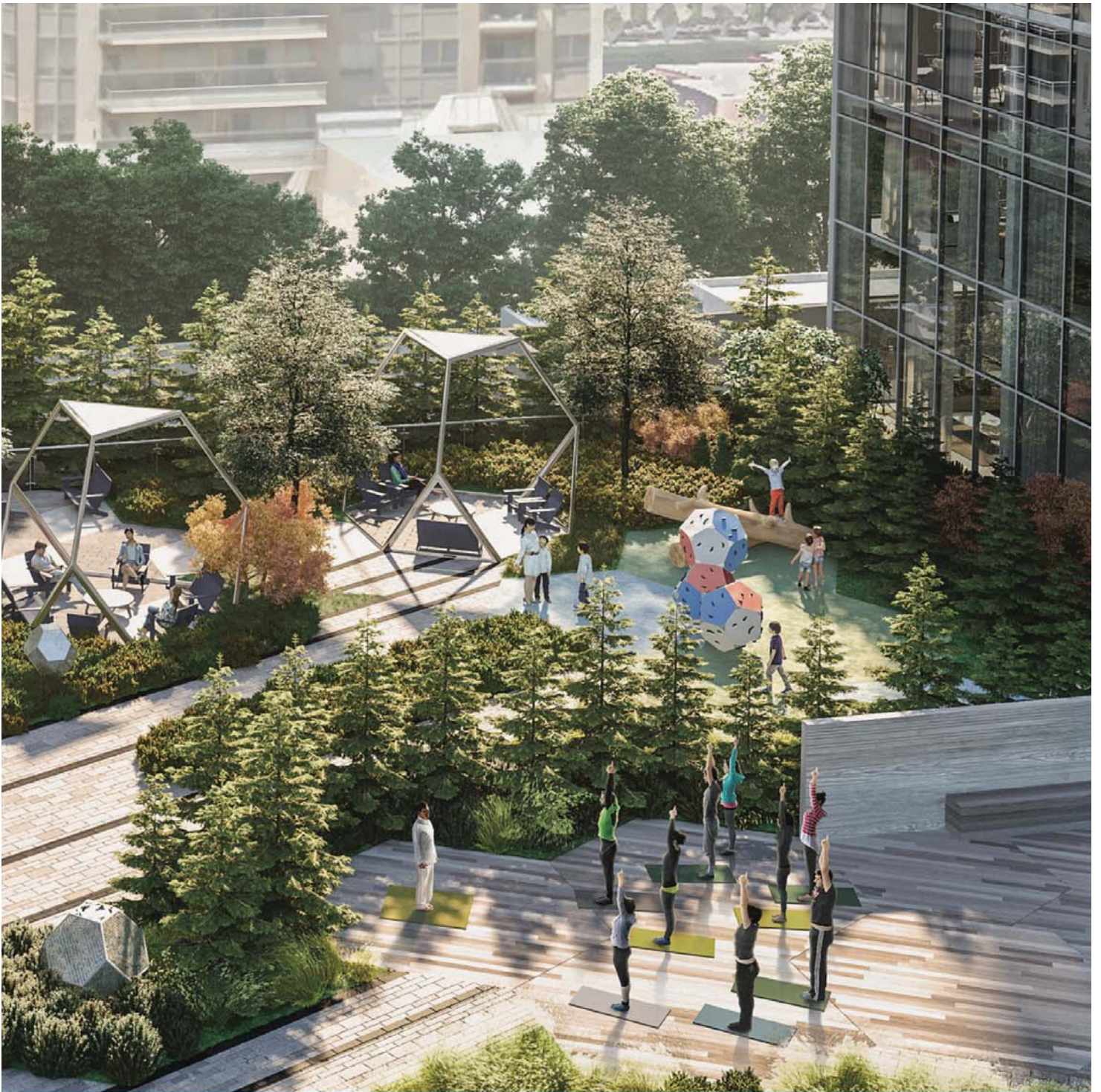
Wesley thinks of everything. Just because you can't make it to the office doesn't mean you should miss out on all the conveniences. Welcome to the innovative Co-Working Zone — get down to business at one of the spacious workstations, relax and read your weekly reports in the lounge area or book a productive brainstorm session in one of the private meeting rooms. Working from home has never been so efficient and enjoyable!

Illustration is artist's concept. E. & O. E.



CLUB **W**
CO-WORKING ZONE





Wesley. the outdoorsy type

There's nothing like sunshine and fresh air to make your smile grow. The 6th floor terrace provides an incredible array of ways to get the most out of a nice day. Greet the sun with morning yoga, get the kids to put down their technology and hop on some play structures, find a cozy corner to curl up with a good book or make the perfect day even better by gathering friends together and showing off your barbeque prowess. At **Wesley Tower**, the great outdoors are just an elevator ride away.

Illustration is artist's concept. E. & O. E.



you're
gonna
love
Wesley



The 7th floor is the place to grow and get centered.

Give your green thumb a good workout in the Resident Gardening Plots where you can grow your own fresh veggies and herbs. You can also take the time to relax with friends or to focus on yourself and get zen in the Yoga Zone.

Wesley
has a
green
thumb



Illustration is artist's concept. E. & O. E.

Daniels' urban agriculture COMMITMENT



For Daniels, urban agriculture is truly who we are.

Always thinking outside the box, Daniels has worked hard to incorporate urban agriculture opportunities, such as container balcony gardening, community gardening plots, greenhouses, edible landscaping and farmers' markets into our new home communities wherever possible. Located on the 7th floor Outdoor Terrace, the resident gardening plots at **Wesley Tower** will invite green thumbs to come together, establish a deeper sense of community, and feel connected to the earth and each other in an interactive way.

Daniels
love where you live™



This foundation of community was initially established in 2009, and was then carried over to Daniels Erin Mills and **The Backyard Farm & Market**, which was established in 2013. This unique farmers' market has been a flourishing endeavour, led primarily by volunteers from the surrounding neighbourhood. The Backyard Farm & Market is open on Saturdays during the summer months and offers local, organic, chemical-free produce and artisanal baked goods from a variety of vendors. The market is also a community hot spot that offers other amenities, such as harvest gardens, children's play spaces, and a storytelling circle.

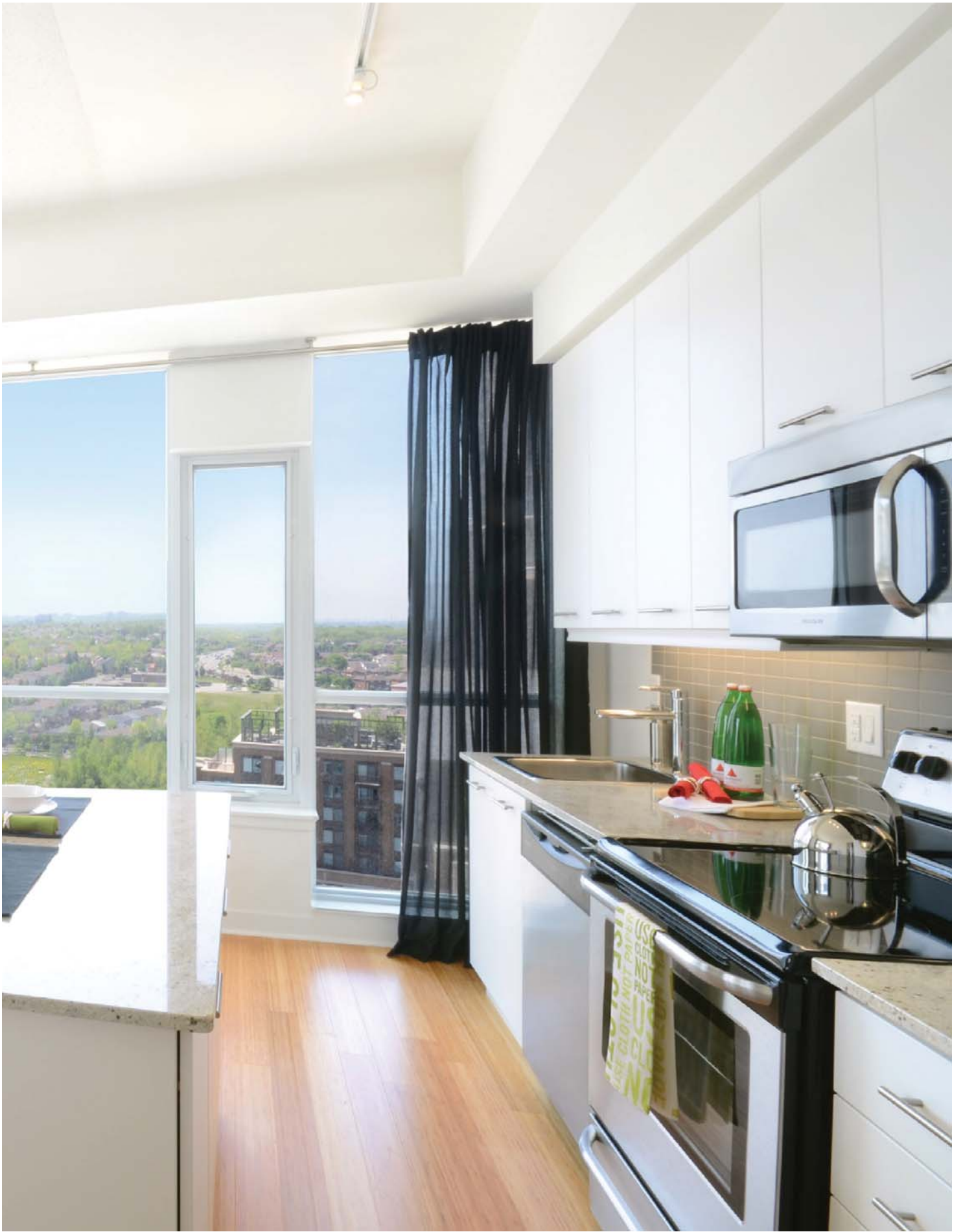


Style that will WOW you

Your great taste has finally met its match. **Wesley Tower** is home to bright and sophisticated design. Spacious 9-foot ceilings span over beautiful laminate floors, providing an elegant backdrop for your creative vision. With contemporary custom cabinetry, quartz countertops and stunning stainless steel appliances, you'll get rave reviews even before you serve the first dish. Every finish at **Wesley Tower** has been chosen to meet the highest standards — yours.



Finishes and views at Daniels City Centre - Wesley Tower may vary from those shown. E. & O. E.





PLAYDIUM - ONE OF SEVERAL ENTERTAINMENT COMPLEXES



SQUARE ONE MALL - OUTSTANDING RETAIL

WALK EVERYWHERE



WALK SCORE:
93
Walkers'
Paradise*



LIVING ARTS CENTRE - ART ON THE INSIDE AND OUT



CINEPLEX ODEON - BLOCKBUSTER CENTRAL



CELEBRATION SQUARE - THE WORLD PARTIES HERE



YEARN TO LEARN? - SHERIDAN HAS WHAT YOU'RE LOOKING FOR

AMAZING RETAIL



13

minute walk to Square One

EASY ACCESS



9

minute drive to the QEW

COMMUTING OPTIONS



18

minute walk to the GO Station

MAJOR HIGHWAYS



9 minute drive to the 401
5 minute drive to the 403
12 minute drive to the 407

a thriving community in full bloom

Vibrant and bustling with activity, you'll find everything you need — arts and cultural events, activities, sports, dining, shopping — all within easy walking distance.



GREEN SPACES FOR QUIET CONTEMPLATION

*Walk score is approximate. E. & O. E.

Daniels
love where you live™

THE DANIELS CORPORATION:

OVER 34 YEARS
& BUILDING

Strong

THE DANIELS CORPORATION BUILDS WITH A
PASSION FOR CREATING VIBRANT COMMUNITIES
IN EVERY SENSE OF THE WORD.

Daniels looks beyond the bricks and mortar, including social, cultural and economic infrastructures that will create a unique sense of place. This commitment has been an integral part of Daniels' corporate philosophy for over 34 years. Daniels has built more than 27,000 award-winning homes and apartments in master-planned, mixed-use communities, and commercial and retail spaces, and has earned its standing as one of Canada's largest and preeminent builders/developers. Company founder John H. Daniels is a towering figure of the North American real estate industry. In a career that has spanned over 50 years, the former Chairman and CEO of Cadillac Fairview Development Corporation has left an indelible mark on the quality of the places in which people live, work, play, create and shop.

OUR APPROACH

Led by company President Mitchell Cohen and a creative team of visionary professionals, The Daniels Corporation's integration of residential and commercial divisions results in a stable turnkey operation, which earns the company a high level of industry and public trust. Daniels plans, designs, develops, builds, and manages all residential and commercial properties in-house, enabling the ultimate in quality control and streamlined service. In essence, Daniels is an all-inclusive service provider - a company dedicated to seeing each project through to construction completion and beyond.

INNOVATION IN MASTER-PLANNING

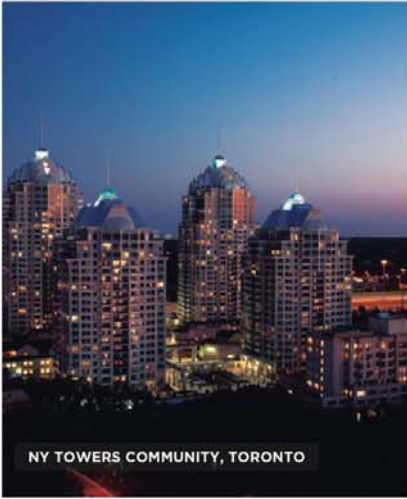
Daniels transforms underutilized land into sought after master-planned communities that include residential, name-brand retail and commercial opportunities. Daniels' land-use planning is based on the principle of integration into the existing urban fabric, creating neighbourhoods that fit seamlessly into their surroundings, providing a broad customer base for homebuyers, retailers and commercial businesses. For example, Daniels is partnering with Toronto Community Housing to revitalize the 69-acre Regent Park community in Toronto's Downtown East, which is being looked at around the world as the gold standard by which challenged urban neighbourhoods can be reimagined as healthy, sustainable communities. Daniels also partnered with renowned filmmaker Ivan Reitman to build TIFF Bell Lightbox, an international destination for the world of film. In addition to the iconic home of the Toronto International Film Festival, this mixed-use development includes restaurants, ground floor retail, a commercial parking garage and the 44-storey Festival Tower Residence. Daniels has also created iconic neighbourhoods throughout the GTA, providing residential, retail and commercial services within their NY Towers and HighPark Condominium communities in Toronto, as well as Daniels City Centre and Daniels Erin Mills communities in Mississauga.



HIGHPARK CONDOMINIUMS, TORONTO



ARC CONDOMINIUMS, ERIN MILLS



NY TOWERS COMMUNITY, TORONTO



DANIELS FIRSTHOME™ COMMUNITIES ACROSS THE GTA



FESTIVAL TOWER ATOP TIFF BELL LIGHTBOX, TORONTO



ONE COLE CONDOMINIUMS, REGENT PARK, TORONTO



PAINTBOX CONDOMINIUMS, REGENT PARK, TORONTO



ONE PARK PLACE CONDOMINIUMS, REGENT PARK, TORONTO



DANIELS WATERFRONT - CITY OF THE ARTS, TORONTO

Illustrations are artist's concept. E. & O. E.



CF EATON CENTRE, TORONTO

BUILDING FOR EVERYONE

Dedicated to upholding a “people-first” philosophy, Daniels has long been a champion of affordable rental and ownership housing, and has built 3,600 affordable rental-housing units under several government programs. Daniels was the first developer to offer purpose-built rental housing in the Greater Toronto Area in 25 years through its Gateway Rental portfolio. In partnership with Sun Life Financial, Daniels has built a market rental building as part of its Daniels Erin Mills community in Mississauga, and in Regent Park, Daniels is building a high density independent living building in partnership with Chartwell Retirement Residences. Daniels FirstHome™ communities across the GTA provide quality-built residences priced within the reach of first-time buyers and, at selected communities, Daniels has built seniors housing in partnership with Amica Mature Lifestyles Inc. On the commercial end of the spectrum, Daniels creates outstanding business opportunities for national brand companies as well as grassroots not-for-profit organizations. For over 34 years, Daniels has embraced financial and hands-on generosity toward a number of charities and non-profit organizations, including Second Harvest, Eva’s Initiatives, FoodShare, Habitat for Humanity, Covenant House Toronto, Egale Canada, Regent Park School of Music, and the Regent Park Film Festival.

SUSTAINABILITY

Long before “green” became an industry buzzword, The Daniels Corporation took a proactive approach to protecting the environment through innovation in its construction techniques. Daniels continues to build for efficiency and environmental sustainability through standards beyond the Ontario Building Code, and in some cases, to LEED Gold certification. Within the Canadian building industry, Daniels is also leading the urban food revolution through trailblazing urban agriculture initiatives that incorporate farmers’ markets and urban allotment gardens into its residential communities.

Understanding that quality of life is created by much more than physical buildings, Daniels goes above and beyond to integrate building excellence with opportunities for social, cultural and economic wellbeing. In so doing, value is created for everyone.

WEAVING ARTS AND CULTURE INTO THE COMMUNITY FABRIC

Daniels has consistently demonstrated the value of embedding arts and culture into the fabric of new communities. In Regent Park, Daniels partnered with Artscape, Toronto Community Housing, and members of the local community to create Daniels Spectrum – a 60,000 square foot cultural hub. Setting Daniels apart even further, the company has established an art procurement program that identifies and purchases art from local and emerging artists for residential and commercial lobbies and amenity spaces, thus contributing enormously to the area’s economic development.



THE BARTHOLOMEW, REGENT PARK, TORONTO Illustrations are artist's concept. E & O. B.



DANIELS CITY CENTRE COMMUNITY, MISSISSAUGA



Daniels City Centre
WESLEY TOWER

LOVE WHERE YOU LIVE

when you choose Wesley Tower

2016 & 2017 Ontario High-Rise Builder of the Year

Tarion Warranty Corporation has named The Daniels Corporation Ontario's High-Rise Builder of the Year for the fourth time.

This award is based solely on homeowners' satisfaction with their customer service delivery – our customers are truly our best advocates.

Being recognized by the industry and our peers is terrific, but to be acknowledged in this way by our homeowners is the ultimate tribute. We will work tirelessly in Mississauga's City Centre to ensure your dream of owning a home in **Wesley Tower** is everything you imagined it would be.

For over 15 years, Daniels has been at the forefront of transforming Mississauga's core into a diverse, vibrant and thriving community. Our homes have not only been thoughtfully designed to connect residents to their neighbourhood - they've also become iconic buildings that help define the Mississauga skyline. And the addition of Wesley Tower continues this tradition with a truly unique design that fits seamlessly into its surroundings. The future looks bright in Daniels City Centre and we look forward to building it.



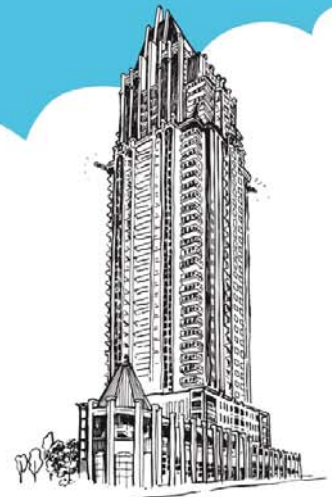
**NO. 1
CITY CENTRE**

2002



**CAPITAL
NORTH & SOUTH**

2004



ONE PARK TOWER

2005

Daniels City Centre



CHICAGO

2007



LIMELIGHT
NORTH & SOUTH

2013



WESLEY TOWER

2017 ...

Daniels City Centre

WESLEY TOWER

DANIELSCITYCENTRE.COM



Daniels
love where you live™

